



ABOVE & BEYOND



EXPERIENCE

MEET, EXPLORE AND ENTERTAIN
AT EASTNOR





LAND ROVER EXPERIENCE EASTNOR INTRODUCTION

At Land Rover Experience we tailor our corporate days to your requirements; our objective is delivering fun and exciting days.

You'll drive the latest Land Rover models over 5,000 acres of Eastnor Castle Estate, where Land Rover has tested the off-road capability and technology of its vehicles for over 50 years.

A visit to Land Rover Experience, Eastnor rewards customers for their loyalty or thanks employees for a job well done. It's a truly unique and inspiring day.

From meetings with a drive to bespoke product launches, we are confident you'll find what you're looking for.





EASTNOR MEETING AND DRIVE



Our Meeting and Drive days include both work and play. Hold a company meeting and combine it with an off-road drive. Your day will include:

- Tea, coffee and bacon rolls on arrival
- Exclusive use of our meeting facilities
- 2 course buffet lunch
- A thrilling drive around our 5000 acre estate



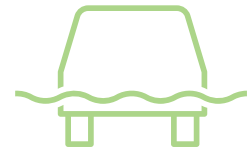


EASTNOR FULL DAY ADVENTURES

Choosing from the full vehicle line up, your guests will experience the thrill of driving the latest Land Rover models over rough terrain, steep inclines and deep rutted tracks.

The Full Day Adventure is an awe-inspiring day which showcases the true capability of Land Rovers in a stunning setting. Your day will include:

- Tea, coffee and bacon rolls on arrival
- Tailgate refreshment hamper
- 2 course buffet lunch
- 5 hours of pure driving pleasure





EASTNOR TEAM BUILDING

Our team building days don't just offer driving experiences, but also mind puzzles and physical challenges to really get your team working together.

The full day activity includes:

- Breakfast, Lunch and refreshments throughout the day
- Vehicle-based learning and contests
- Physical and mental challenges





EASTNOR NIGHT DRIVE

If you're looking for something completely different, a Land Rover Experience Night Drive delivers both fun and exhilaration. Driving the latest Discovery 4 or the iconic Defender, you'll be thrown into complete darkness and experience our thrilling estate in a whole new way.

Run between October and January these make for the perfect alternative to the annual Christmas Party.

- Run from 15:30-22:30
- Thrilling night drive in a stunning setting
- Evening dinner provided
- Local accommodation details available





EASTNOR OTHER OFF-ROAD ADVENTURES



Off-Road Treasure Hunt

Fancy doing something a little different? Split into teams and crack the clues in this exciting Land Rover Experience challenge. Driving the latest Discovery 4 to traverse rough terrain, steep slopes and deep water, teams will explore the 5000 acre Eastnor Castle Estate, in an attempt to complete the challenge and claim first place.



Simulated Game Shoots

Combining a world renowned Shooting Estate with the very latest Land Rover models, these days provide the perfect experience for corporate hospitality, charity fund raisers and reward and recognition days.

Run from April to September these events offer the thrill of the shoot, when the game season is closed.



EASTNOR BESPOKE EVENTS

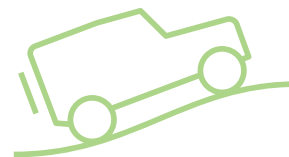


Land Rover Experience is ideal for any number of events. Our off-road tracks and trained instructors are not the only benefit. Eastnor Castle makes it an ideal venue for all kinds of events:

- Product launches
- Team away days
- Reward and recognition events



Get in touch with us and see how we can help you create your perfect event.





EASTNOR AN INSPIRING BUSINESS VENUE



Meetings are so much more productive when the participants are smiling – and there are few more uplifting locations than Eastnor. We offer a choice of rooms, from a 24-seat boardroom to a garden lounge for five, with all the support you need to make your day a success.

Rooms are equipped with state-of-the-art technology, including conference call phones, projectors and Wi-Fi connectivity. The Hervey Bathurst Room also features Click Share wireless connectivity for multiple laptops.



Refreshments and a choice of menus featuring local produce are freshly prepared for you by our catering team – leaving you free to relax and focus on your day's objectives.

Whether or not you add a driving element to your day, Eastnor's spectacular setting puts every attendee in the right frame of mind – refreshed, stimulated and ready to work.



EASTNOR OUR 'UPSTAIRS' ROOMS

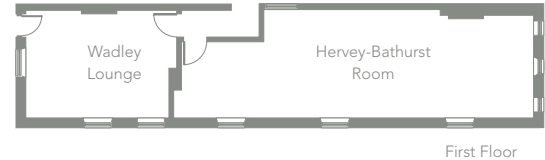
A room for every purpose

With five separate meeting rooms, Eastnor can offer you the ideal space for your needs – from a one-to-one discussion to a full board presentation.

Upstairs, we can offer the Hervey Bathurst Room, seating up to 24. It's bright, modern and well-appointed with Wi-Fi, conference call facilities, projector and screen.

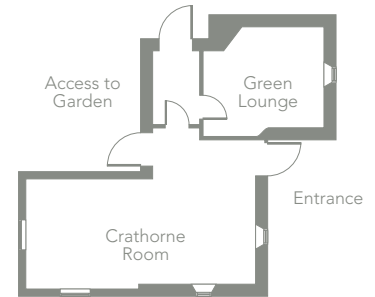
On the same floor we offer the Wadley Lounge; this features comfortable lounge seating on three sides of the room and accommodates up to seven people. It's available separately or can be used as a break-out area with the Hervey Bathurst boardroom.

- Hervey Bathurst Room: Up to 24 people. Wi-Fi, conference call facilities, projector and screen
- Wadley Lounge: Up to 7 people. Conference call facilities, Wi-Fi, free-standing screen with laptop connectivity
- Stationery and flip charts provided





EASTNOR GARDEN ROOMS



Great Outdoors. Superb Indoors

Sometimes, it's good to 'take five' and stroll outside for a breath of fresh air – and our two garden rooms both offer easy access to the great outdoors.

The Crathorne Room seats up to ten, boardroom style. As well as Wi-Fi, conference call and projection facilities, making it straightforward to connect laptops to a screen the whole room can see.

The adjacent Green Lounge has comfortable lounge seating for up to five, with a presentation space in the centre. Both The Green Lounge and The Crathorne Room have their own access to the garden, so meetings can be held simultaneously without interruptions.

- Crathorne Room: Up to 10 people. Wi-Fi, conference call facilities, projector and screen projector and video
- Green Lounge: Up to 5 people. Conference call facilities, Wi-Fi
- Stationery and flip charts provided



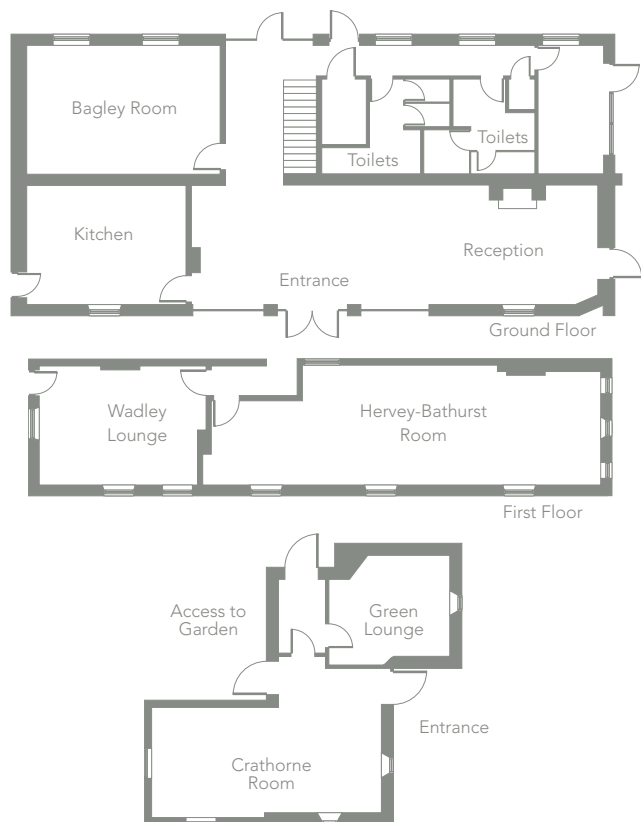
EASTNOR TAILORED TO YOUR NEEDS

Eastnor is a meeting venue that your colleagues will find inspirational. Unlike some soulless ring-road business hotel, it's set in beautiful surroundings that recharge the mental batteries.

It's our aim to make your day a success. We are also highly flexible – you can hire as many rooms as you like, for as long as you like. You can also make the Eastnor Land Rover Experience part of the day's schedule. For team-building or client entertainment, an off-road challenge is a great way to round off a memorable day.

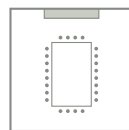
To find out more, or to arrange a hosted visit, please call us on **01531 638779**

EASTNOR - THE BOTHY



The Bothy – Room Specifications

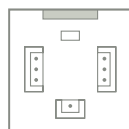
Capacity



Hervey-Bathurst Room – 14 x 4.1m

- Boardroom style
- Centrally located table;
- Classic layout, ideal for debate and discussion;

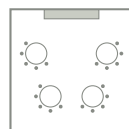
24



Wadley Lounge – 5.75 x 4.1m

- Lounge style
- Seating around three sides of the room – good for presentations;
- Presentation space in the middle of the room.

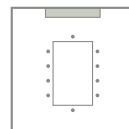
7



Bagley Room – 6.65 x 4.25m

- Cabaret style
- All delegates facing front/centre on round tables;
- Ideal for small-group work.

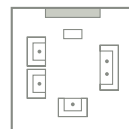
16



Crathorne Room – 7.35 x 3.35m

- Boardroom style
- Centrally located table;
- Classic layout, ideal for debate and discussion;
- Popular for smaller meetings.

10



Green Lounge – 3.86 x 3.47m

- Lounge style
- Seating around three sides of the room – good for presentations.

5

All rooms have access to WiFi, landline and powerpoints. HDMI and laptop/PC connectivity.

The Hervey-Bathurst room has Click Share Technology which allows for wireless connectivity for multiple users for presentations and video.

Directions

Leave Ledbury on the A449 toward Malvern and after 1.5 miles turn right on the A438 to Eastnor. In the village of Eastnor the road deviates to the left with the Castle gates straight ahead. Do not enter the gates but turn right at this junction. The Bothy car park will be found on the left after 0.5 mile.

Sat Nav Users

We strongly recommend customers approaching along A417 (including those leaving the M50 at Junction 2) travel through Ledbury town centre to avoid Clencher's Mill Lane, a notoriously narrow road which can feature in some Sat Nav directions. Thank you for your co-operation, it helps Land Rover Experience minimise any impact of our operations on residents in the area.

GPS

Latitude: N 52° 01' 47"

Longitude: W 02° 23' 25"

Land Rover Experience Eastnor

The Bothy, Eastnor Castle, Ledbury, Herefordshire HR8 1RL
www.eastnor.landroverexperience.co.uk



**LAND ROVER EXPERIENCE
EASTNOR**
CONTACT US

To find out more, simply call or email
the events team:

Telephone: **01531 638779**

Email: eastnorevents@landroverexperience.com

